

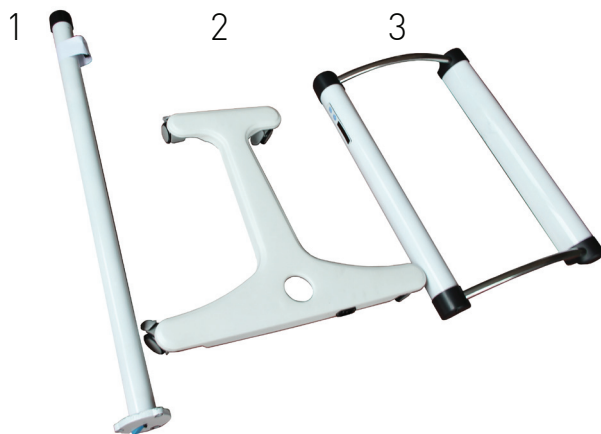


Refer to User Manual for comprehensive information:
<http://www.mttS-asia.com/colibri-phototherapy/>

STEP 1 - Remove components from the box

Box contains:

1. Stand
2. Base
3. Canopy set



STEP 2 - Stand assembly preparation

1. Remove protection label.
- 2-3. Unscrew slowly height adjustment knob.



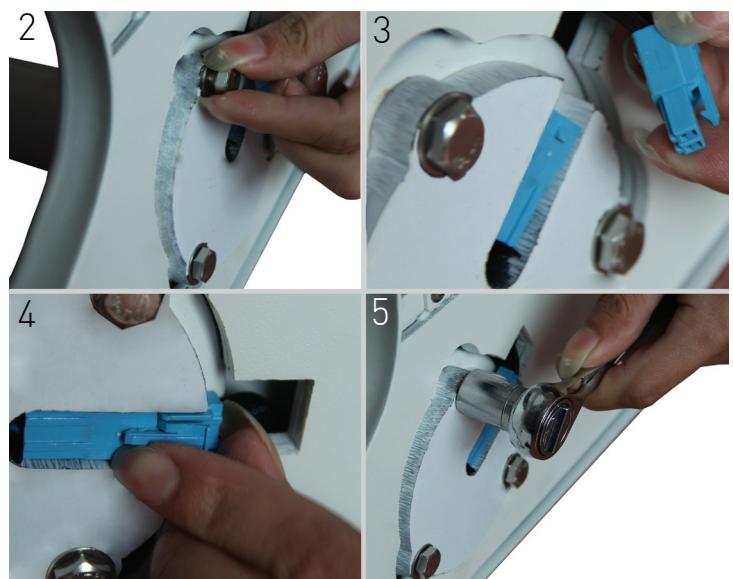
While unscrewing the knob secure inner pole with hand in order to prevent uncontrolled releasing.

4. Remove height adjustment knob.



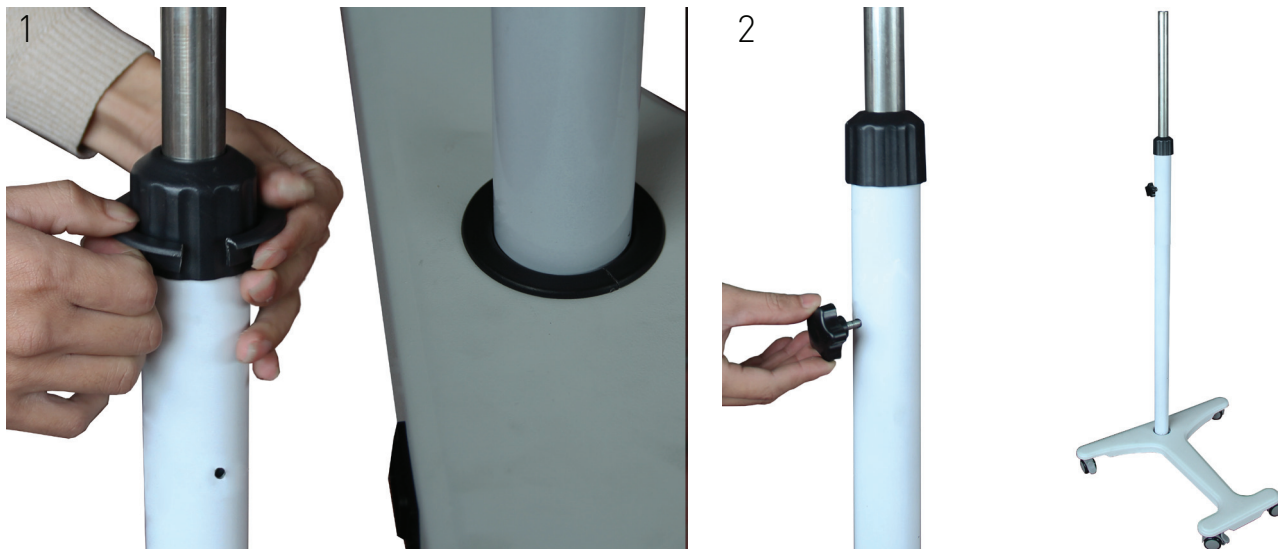
STEP 3 - Base assembly

1. Insert the stand into the base.
2. Screw in 3 bolts into the thread hole.
- 3-4. Connect and secure DC connector.
5. Tighten the bolts using wrench (size 13).



STEP 4 - Stand assembly

1. Insert stand support ring.
2. Screw in height adjustment knob.



STEP 5 - Canopy set assembly

1. Pull out plastic bracket with DC connector from inside of the stand.
2. Connect it with the canopy set wire.
- 3-4. Insert connected wire back into the stand and cover it with the plastic bracket.
5. Attach canopy set to the stand and secure it with screws.



2 people may be required to perform operations 2-4.



STEP 6 - Plug in and power up