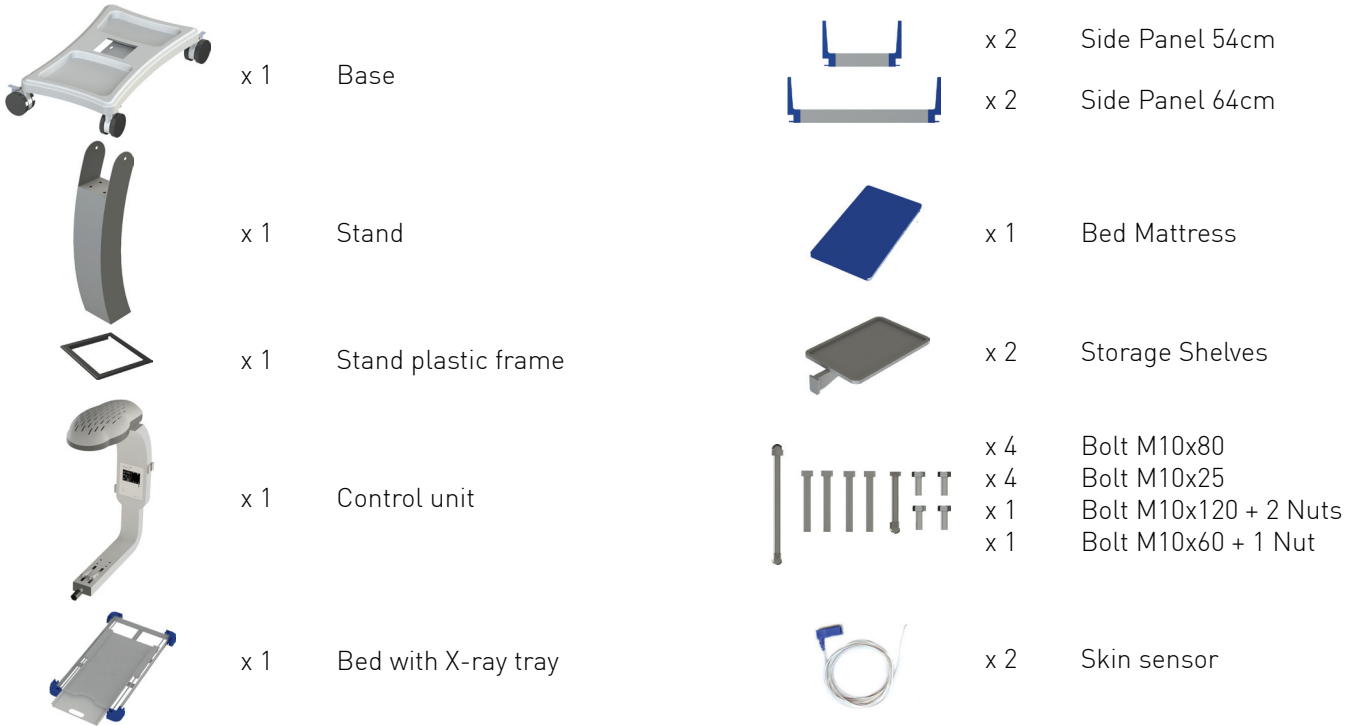




Refer to User Manual for comprehensive information:  
<http://www.mttts-asia.com/wallaby-warmer/>

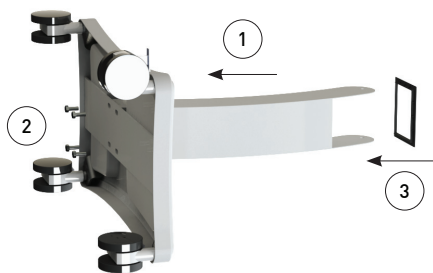
## STEP 1 - Remove components from the box



## STEP 2 - Attach Stand to Base



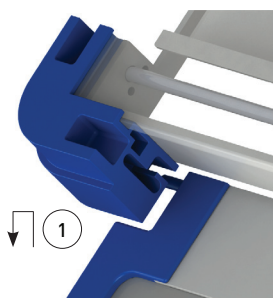
Two people might be required to perform this step



## STEP 3 - Attach Control Unit to Stand

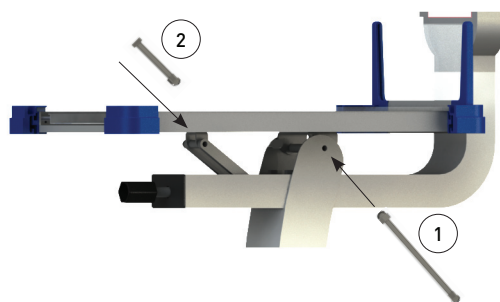


## STEP 4 - Attach Side Panel to Bed

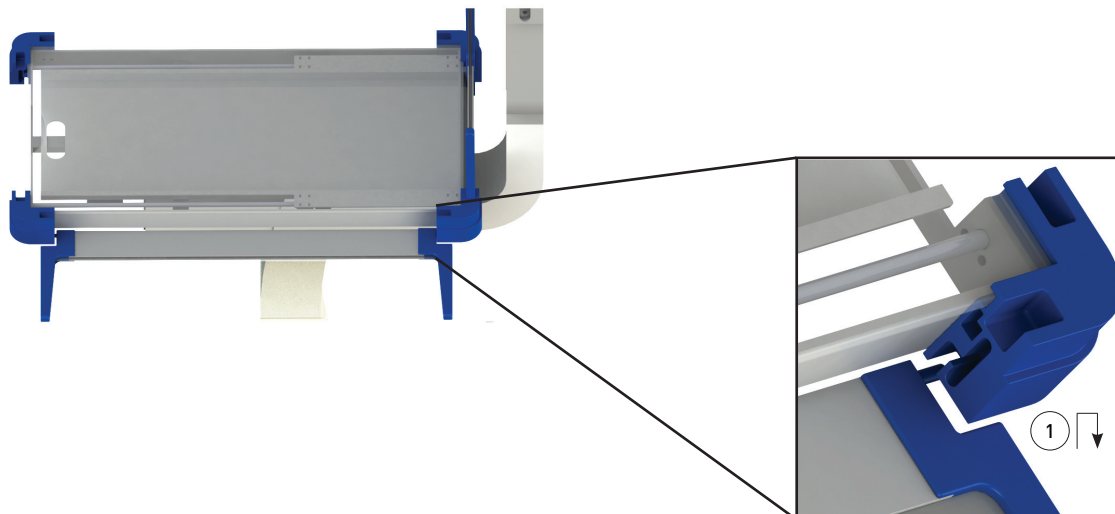


Attach only side panel that is closest to the Control Unit in this step.  
 Remaining panels will be attached in Step 6.

## STEP 5 - Attach Bed



## STEP 6 - Attach 3 remaining Side Panels to Bed



## STEP 8 - Attach Storage Shelves



## STEP 9 - Plug in and power up

