



Refer to User Manual for comprehensive information:
<http://www.mttS-asia.com/impala-ventilator/>

STEP 1 - Remove components from the box



x 1 Base



x 1 Oxygen Cylinder Holder



x 1 Stand



x 1 Supporting Arm



x 1 Basket



x 1 Impala Control Unit



x 1 Device Holder



x 3 Bolt M5x15 (Base)
 x 2 Bolt M5x15 (Basket)
 x 3 Bolt M5x10 (Device)
 x 2 Bolt M10x30 (Oxygen)

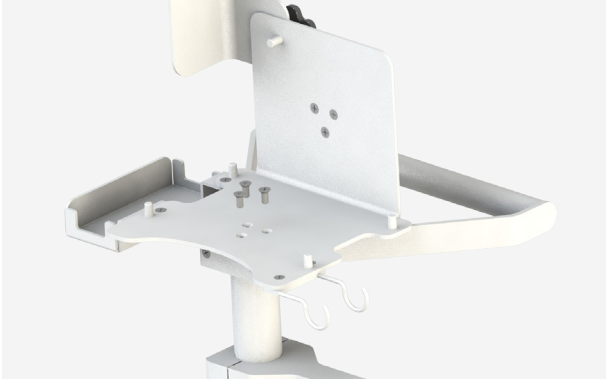
STEP 2 - Attach Stand to Base



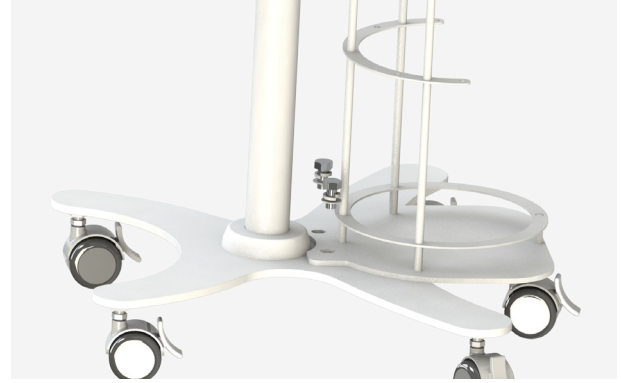
STEP 3 - Attach Basket



STEP 4 - Attach Device Holder



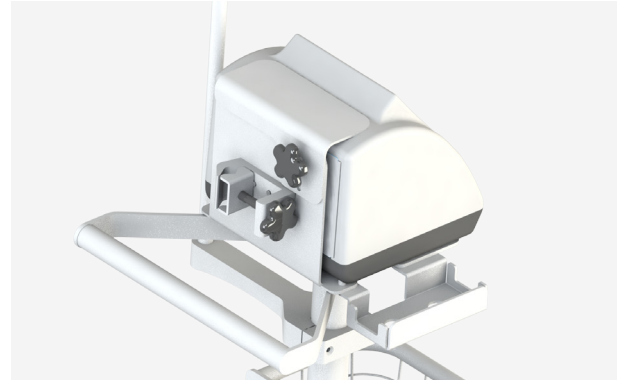
STEP 5 - Attach Oxygen Cylinder Holder



STEP 6 - Attach Supporting Arm



STEP 7 - Attach Impala Control Unit



STEP 8 - Plug in and power up



Refer to User Manual or Reprocessing Guide for instructions on breathing circuit assembly