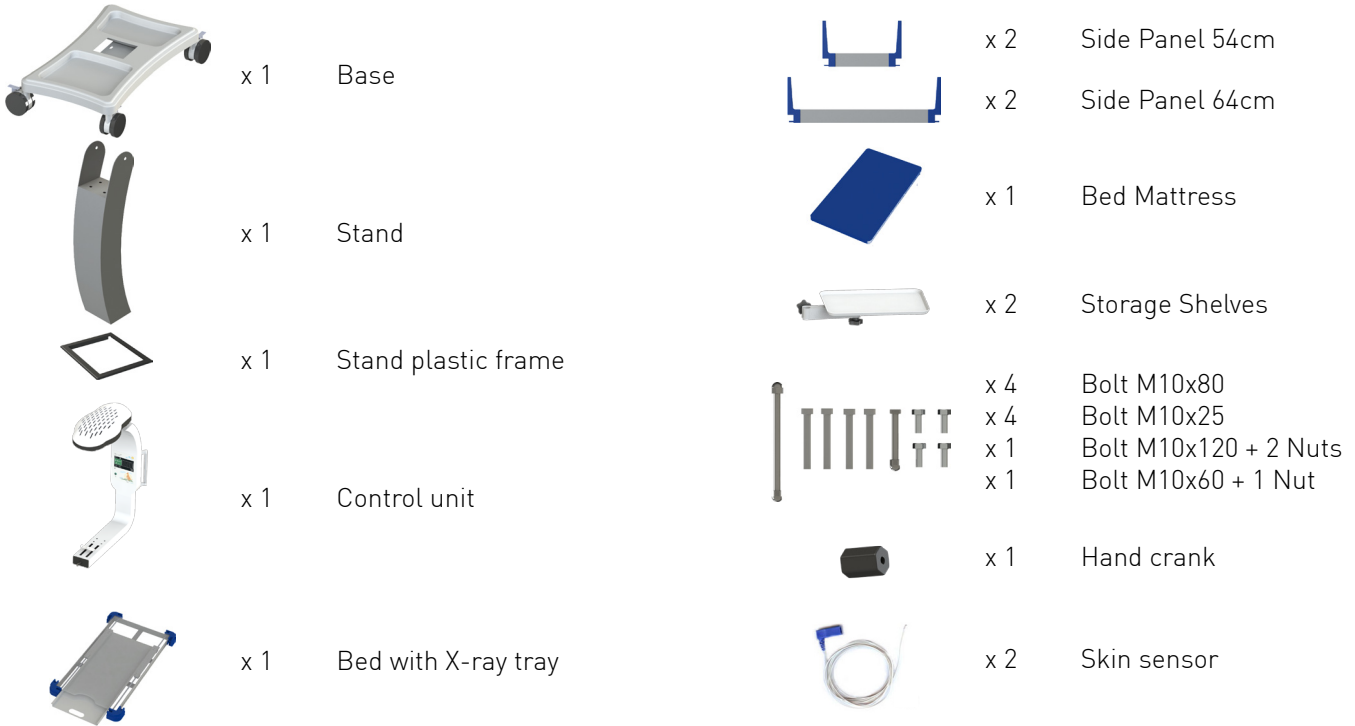




Refer to User Manual for comprehensive information:
<http://www.mttts-asia.com/wallaby-warmer/>

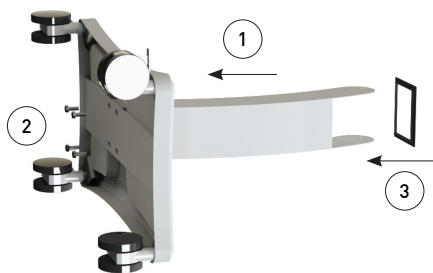
STEP 1 - Remove components from the box



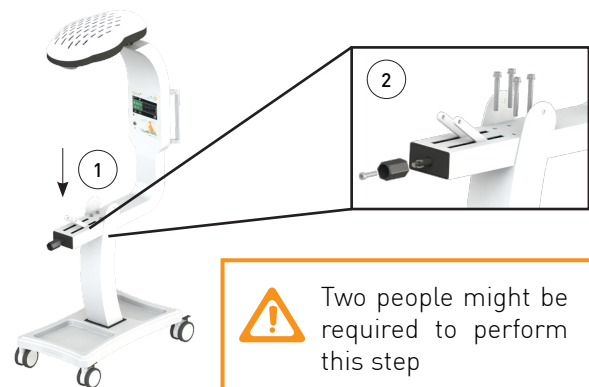
STEP 2 - Attach Stand to Base



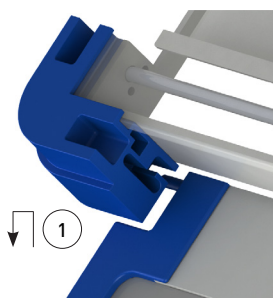
Two people might be required to perform this step



STEP 3 - Attach Control Unit and Hand Crank to Stand

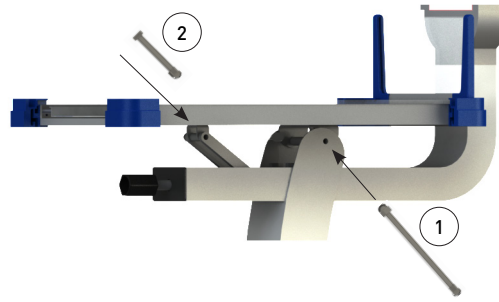


STEP 4 - Attach Side Panel to Bed

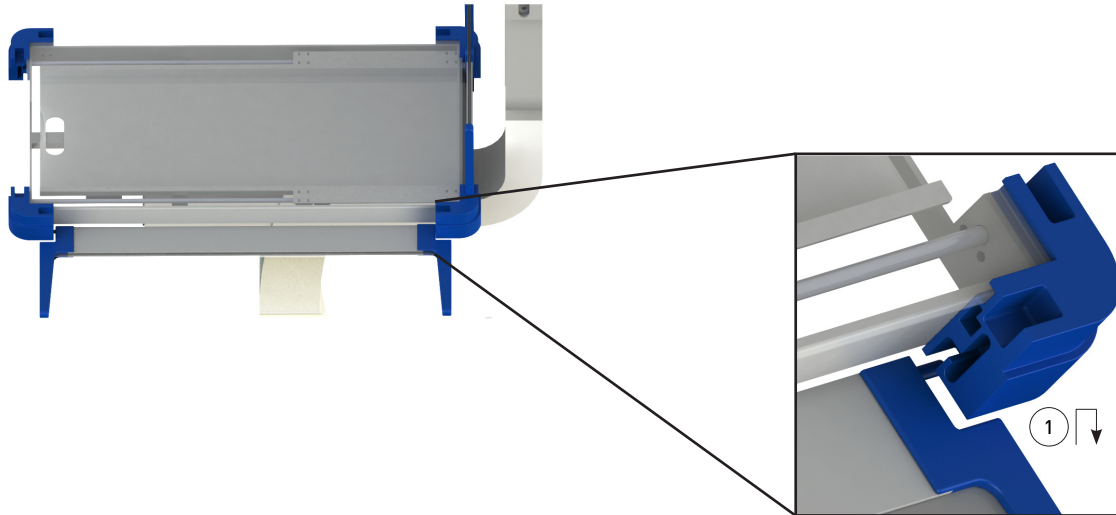


Attach only side panel that is closest to the Control Unit in this step.
Remaining panels will be attached in Step 6.

STEP 5 - Attach Bed



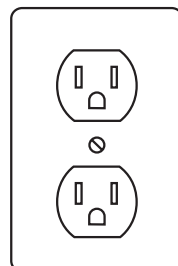
STEP 6 - Attach 3 remaining Side Panels to Bed



STEP 8 - Attach Storage Shelves



STEP 9 - Plug in and power up



220-240 V (AC)



Make sure to remove the bubble wrap from the heater element before the first use

